

Early Help for Children and Families
Bishop Perowne Church of England College
EARLY HELP PROVISION

At Bishop Perowne Church of England College we recognise the challenges that families face in bringing up children. There may be times when you need extra help and support. If this is the case please come and talk to us. There are many ways in which we can help as outlined in this offer of early help. We can also help to plan specific support for families in the forms of My Plan, My Plan + and My Assessment where we can work together to set and achieve outcomes.

The diagram below shows the range of needs at different levels. We use this graduated approach to make sure we provide the best support for different families' individual situations.



Providing early help to our pupils and families at Bishop Perowne Church of England College means we are more effective in promoting support as soon as we can. Early help means providing support as soon as a problem emerges, at any point in a child's life, from the foundation years through to teenage years.



Key Personnel:

The Designated Safeguarding Lead (DSL) is: Nigel Ford

Contact details:

email: fordn@bishopperowne.co.uk Telephone: 01905 746 819

The deputy DSL(s) is : Natalie Tunstall

Contact details:

email: tunstalln@bishopperowne.co.uk Telephone: 01905 746800

The nominated safeguarding governor is: Caroline Fitzmaurice

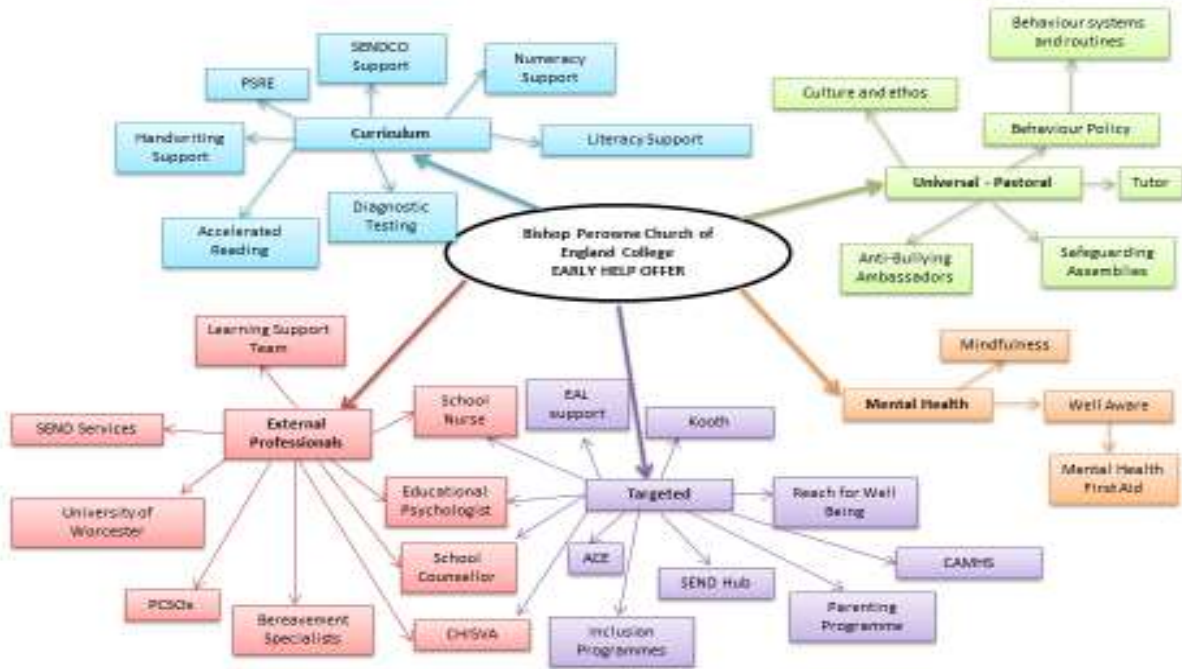
Contact details:

email: c/o wigleyk@bishopperowne.co.uk Telephone: 01905 746 800

The Headteacher is: Mark Pollard

Contact details:

email: pollardm@bishopperowne.co.uk Telephone: 01905 746 800




more mindful learning...



 Bishop Perowne

- 01 Mosaic Health First Aid (Routine Appointments or Same Day Appointments for urgent issues)
- Group Well Being Sessions – Stress
- Group Well Being Sessions – General Well Being
- Online Self Help – www.bishopperowne.co.uk
- Student Led Support – Anti Bullying Ambassadors
- Referrals to local NHS mental health services such as CAMHS and Reach for Well Being
- Referrals to professionally qualified counsellors and school nurse
- Parent Support Groups
- Parent Advice Sessions
- Mindfulness Sessions

Visit our website for more details: bishopperowne.co.uk

<p>What is our Early Help Offer?</p>	<p>What is Early Help?</p> <p>Early Help means providing support as soon as a problem appears, to stop it from getting worse. This could be at any point in a child's life, from birth to the teenage years.</p> <p>Anyone can provide early help – you don't need to be an expert professional. Early help is not about passing the issue on to an expert, but thinking about what is the best support you can offer.</p> <p>You can provide effective support by:</p> <ul style="list-style-type: none"> • listening • working with other people who could help • finding out about specialist agencies who could help • filling out an Early Help Assessment with the person you are helping • contacting Children's Social Care if you think the problem is more serious <p>http://www.worcestershire.gov.uk/eha</p> <p>There is a lot of information and advice on the Advice, Care, Health and Support pages as well as detail of local services that can provide support for children, young people and families.</p> <p>Download: Worcestershire Safeguarding Children Board – Early Help Strategy 2017 to 2020</p> <p>Download: Worcestershire Special Educational Needs and Disabilities (SEND) strategy</p>
<p>The Front Door to Children's Services (Previously: Children's Helpdesk).</p>	<p>If a member of staff, parent/carer or member of the public thinks a child or young person is at immediate risk of significant harm they should contact the Family Front Door (FFD) – 01905 822 666 or in an emergency always call 999.</p> <p>Do not wait to discuss this with the DSL/DDSL but do report it afterwards.</p>



WSCB (Worcestershire Safeguarding Children's Board) website.	http://www.worcestershire.gov.uk/safeguardingchildren Important information for parents and professionals across Worcestershire in relation to keeping children safe and avenues of support including early help options. Everyone should know how to access this website which has all of the agreed Worcestershire safeguarding and child protection processes on it.
Universal source of help for all families in Worcestershire: Worcestershire Family Information Service (FIS)	Worcestershire Family Information Service (FIS) advisors give impartial information on childcare, finances, parenting and education . FIS are a useful source of information for parents and professionals. They support families, children and young people aged 0-19 years of age (25 for young people with additional needs) and professionals working with these families. They can help link parents up with other organisations that might be able to help or provide the information themselves. http://www.worcestershire.gov.uk/info/20507/childcare/1579/family_information_service
E-safety (Online Safety)	Online Activity (phones, computers) can be a serious risk to children: The use of technology has become a significant component of many safeguarding issues. Child sexual exploitation; radicalisation; sexual predation – technology often provides the platform that facilitates harm. With the right support, education and safety measures in place the internet and new technologies can also bring great benefits but we must all be vigilant <input type="checkbox"/> <input type="checkbox"/> PACE (parents against child exploitation) UK is a useful website to engage parents with safety issues. www.paceuk.info/ <input type="checkbox"/> <input type="checkbox"/> https://www.thinkuknow.co.uk/parents/ - This is the Child Exploitation and Online Protection (CEOP) Centre. It's a one stop shop for most information about online safety. https://www.thinkuknow.co.uk/teachers (excellent resources) <input type="checkbox"/> <input type="checkbox"/> http://educateagainsthate.com/ - This is the government website to help parents and professionals



	<p>understand the risks of children and young people being radicalised by extremists online and how to keep children safe from this.</p> <p>□□ www.internetmatters.org – A great site for helping parents keep their children safe online.</p>
Mental Health	<p>We have some useful self-help guides/leaflets available for you to access online. The guides are available for you to read online. The self-help guides can be accessed by typing the below link into your URL and selecting 'Self Help Guides': www.hacw.nhs.uk/a-to-z/letter-s/</p> <p>Staying Safe http://stayingSAFE.net/</p> <p>SANE 0845 767 800 Email: sanemail@org.uk www.sane.org.uk</p> <p>Samaritans 116 123 (24 hour helpline) www.samaritans.org.uk</p> <p>Rethink Mental Illness 0300 5000 927 www.rethink.org</p> <p>Mental Health Foundation www.mentalhealth.org.uk</p> <p>MIND 0300 123 3393 or text 86463 www.mind.org.uk</p> <p>Anxiety UK 08444 775 774 www.anxietyuk.org.uk</p>
Bullying (including cyberbullying)/ Child death/suicide/prevention	<p>Cyberbullying is using the internet, email, online games or any digital technology to threaten, tease, upset or humiliate someone else.</p> <p>If the police consider a message or post to be</p>



	<p>potentially criminal, they will take appropriate action. This could involve arresting the person responsible or interviewing them under caution. Cases involving sustained abuse or where someone's life is threatened will be treated seriously. The police will consider all of the circumstances when considering the best response to a report of cyber bullying. They will assess how vulnerable the victim is and what resources are required to trace the offender via social networking sites that often operate abroad and to different legislation. In certain cases it may be difficult to take action if the offender isn't in the UK. They will work with the victim to bring about the most suitable and proportionate conclusion, this will include alternative options that include the officer in the case using their discretion and working with the offender to record an apology to the victim.</p> <p>Useful links</p> <p>Bullying UK</p> <p>Childline</p> <p>KidScape: Our resources provide information on issues surrounding bullying, online and personal safety. They can be used directly by young people and parents, as well as in the classroom within schools and youth organisations.</p> <p>https://www.kidscape.org.uk/resources-and-publications/</p>
Hollie Guard-A new personal safety APP	<p>https://hollieguard.com/</p> <p><i>Children & Teens</i></p> <ul style="list-style-type: none">• Hollie Guard keeps your entire family safe.• Keep an eye on your children while they're traveling to and from school with Journey.• Teens can get help quickly while out with friends.• Parents, guardians, and caregivers are automatically

	<p>contacted by both SMS and email.</p>
<p>Hate Crime</p>	<p>A hate crime is a criminal offense whose motivation can be shown to be race, national origin, religion or sexual orientation. A difference of race alone is NOT sufficient to make it a hate crime. There would have to be evidence of racial slurs or racial statements in addition to the crime (this does not trivialise other serious offenses that are NOT hate crimes).</p> <p>Hate Crime: West Mercia Police: Email: contactus@westmercia.police.uk Emergency number: 999 Non-Emergency number: 101 report online to True Vision (opens in a new window) https://educateagainsthate.com/parents/ Call in at your local police station</p>

<p>Children with disabilities team (CWD)</p>	<p>The Children with Disabilities (CwD) Social Work Team provide services designed to meet the needs of children and young people who have complex disabilities.</p> <p>The CwD Social Work Team is one of a range of services that can provide support to children and young people with disabilities and their families. Other services available are those provided by health, education, play and youth services as well as community resources provided by voluntary agencies.</p> <p>The CwD team offer services to those children and young people requiring additional resources in respect of their disability, where the disability has a profound impact on the child or young person's life.</p> <p>An assessment will be offered where the child has a condition which is substantial, long lasting or permanent, is a physical and/or learning disability or a life limiting, life threatening condition. These may include:</p> <ul style="list-style-type: none"> • severe learning disabilities • severe physical disabilities
--	---

- severe developmental delay in motor and or cognitive functioning
- profound multiple disabilities
- severe sensory impairment (registered blind and/or profoundly deaf)
- complex and severe health problems that arise from the disability, that are life threatening, degenerative illness or organic disorder resulting in severe disability
- a diagnosis of Autistic Spectrum Condition with an associated learning disability and where the condition severely affects day to day functioning

SEN Services and Support Groups

- [9 Tea Cups](#)
- [autismlinks](#)
Links to events, services and information of use to families of people with Autism
- [Autism Spectrum Condition and Learning Disabilities Group](#), a group for family members and carers, Kidderminster Hospital
- [Autism West Midlands](#) a support group for young people aged 16-24 with Asperger's Syndrome in the Malvern Hills area
- [Autism in Worcestershire](#)
ASPIE is a social self-help and motivation group for adults with Asperger's Syndrome. We provide a centre in Worcester where Aspies feel welcome and accepted.
- Childrens Centres. Find out what's happening at [your local Children's Centre](#)
- Community Paediatric Service
Community Paediatric Service is concerned with developmental delay and learning disability; Motor difficulties such as cerebral palsy and muscular dystrophy; Neuro-developmental conditions including ADHD and ASD; complex behavioural difficulties; sensory impairment; statutory medical & educational assessments
([The Community Paediatric Service South Worcestershire](#), [The Community Paediatric Service Wyre Forest](#) and [The Community Paediatric Service Redditch and Bromsgrove](#))
- [Core Assets](#): Core Assets deliver the

Independent Support Service in partnerships with Worcestershire County Council. They provide confidential, impartial and independent information and support for young people and their families to find their way through the changes to the Special Educational needs and Disabilities (SEND) systems.

Please note: Core Assets Independent Support Programme will be closing on the **31 July 2018**. Independent Support was always intended to be a time limited resource, supporting the transition from statements to EHCPs. From August 2018 onwards, parents, children and young people will continue to be able to access information, advice and support on statutory assessment and annual reviews from your local SENDIASS.

- [Council for Disabled Children](#)
A host of useful leaflets on SEND issues many in Easy Read format to help children understand
- [Disability Information Advice Line \(DIAL\) Worcestershire](#)
Website of the disability advice line South Worcestershire; local info on: Mobility; Benefits and Finance; Carers Support and Respite; Community and Voluntary Support; Disabled Children's Services; Education and Employment; Health; Housing; Independent Living; Learning Disabilities; Legal Support; Leisure and Holidays; Mental Health; Mobility and Aids to Daily Living and Older People's Services
- Dyslexia Parent Support Group. Find out more from the [Worcestershire Dyslexic Support Group](#)
- [Footprints Support for Bereaved Children and their Families in Worcestershire](#)

Support for bereaved children and their families in Worcestershire

- [Learning Disabilities \(opens in a new window\)](#)
We work with people with learning disabilities, their families and the people who support them.



<p>DDNs (Dangerous Drug Networks)</p>	<p>DDN's are drug dealing gangs who target vulnerable people in order to set up drugs distribution networks.</p> <p>These criminals are using extreme violence to establish a presence, displacing an existing drug supply chain and intimidating rivals, witnesses and victims, this has resulted in local murders.</p> <p>DDN's exploit vulnerable teenagers to become drug runners for their network. Early intervention and intelligence are key to safeguard and protect the vulnerable.</p> <p>Presentation For DDN's (PDF, 151.7 KB)</p> <p>For professionals that work in health (PDF, 1.3 MB)</p> <p>For professionals that work with young people (PDF, 1.3 MB)</p> <p>For professionals working in housing (PDF, 1.3 MB)</p> <p>Drug Gangs and Exploitation (PDF, 556.6 KB)</p>
<p>Child Criminal Exploitation (County Lines)</p>	<p>Here is some guidance for frontline professionals on dealing with county lines, part of the government's approach to ending gang violence and exploitation:</p> <p>https://www.gov.uk/government/publications/criminal-exploitation-of-children-and-vulnerable-adults-county-lines</p> <p>Children who are trafficked, exploited or coerced into committing crimes are victims in need of safeguarding and support. Though perceptions are altering these young people are still often criminalised and perceived as having 'made a choice' to take part in illegal activity.</p> <p>https://www.catch-22.org.uk/child-criminal-exploitation/</p>
<p>Child Sexual Exploitation (CSE)</p>	<p>West Midlands Safeguarding Children Procedures has a page dedicated to Child Sexual Exploitation. It provides information about child</p>

sexual exploitation, the roles and responsibilities of relevant agencies and the procedures practitioners should follow to ensure the safety and well-being of children and young people whom it is suspected have been sexually exploited or are at risk of sexual exploitation.

Key facts about CSE

- It affects both girls and boys and can happen in all communities.
- Any young person can be targeted but there are some particularly vulnerable groups: Looked After Children, Children Leaving Care and Children with Disabilities.
- Victims of CSE may also be trafficked (locally, nationally and internationally).
- Over 70% of adults involved in prostitution were sexually exploited as children or teenagers.
- Sexual violence or abuse against children represents a major public health and social welfare problem within UK society, affecting 16% of children under 16. That is approximately 2 million children.

Documents

- [Appropriate Language: Child Sexual and/or Criminal Exploitation Guidance For Professionals \(CSE Police and Prevention website, opens in a new window\)](#)
- [Child Sexual Exploitation: Definition and a guide for practitioners \(GOV.UK website, opens in a new window\)](#)
- [Child Sexual Exploitation – Identification Tool](#)
- [Worcestershire Child Sexual Exploitation Strategy and Action Plan 2017 to 2019](#)
- [WSCB Multi-agency Child Sexual Exploitation Pathway](#)
- [WSCB CSE self assessment tool and guidance](#)

Making a referral

The Local Authority has a duty to make enquiries where a child may be suffering harm or neglect. If you think that a child may be at risk then you can



	<p>let us know via the referral form linked below</p> <p>Useful Websites</p> <ul style="list-style-type: none">• Barnardo's spot the signs: Advice for parents, professionals and young people on the signs of sexual exploitation and how to keep safe• Department for Education (Gov.uk) National Action Plan for Tackling Child Sexual Exploitation• Parents Against Child Sexual Exploitation page is the leading national charity working with parents and carers whose children are sexually exploited• NSPCC definitions, statistics, facts and resources about CSE.• NWG Network: Fighting against CSE and working to inform, educate and prevent child sexual abuse within the UK.• Spotting The Signs of Child Sexual Exploitation: a 15 minute YouTube clip from Health Education England
Domestic violence	<p>Here is a very helpful website for what do to in many different difficult situations: http://www.worcestershire.gov.uk/info/20379/domestic-violence-and-sexual-abuse</p> <p>West Mercia Women's Aid: 0800 980 3331 0800 783 1359 helpline@westmerciawomensaid.org</p> <p>Further reading</p> <ul style="list-style-type: none">• Controlling or Coercive Behaviour in an Intimate or Family Relationship Statutory Guidance Framework (GOV.UK website, opens in a new window)• Domestic Abuse - A toolkit for employers (Wellbeing.BIT website, opens in a new window)• Groups for parents - information and guidance• Multi-agency Statutory Guidance for the Conduct of Domestic Homicide Reviews (GOV.UK website, opens in a new window)• Worcestershire Domestic Abuse Strategy 2017 - 2020 (click to download)



	<ul style="list-style-type: none">• Worcestershire Multi-agency domestic abuse training – Learning Outcomes (click to download)
Teenage relationship abuse	<p>Here is a great PDF helping to understand teenage relationship abuse: U:\U161 CHS\U695 Education Safeguarding\G3 SG\AAA .Education Adviser Safeguarding\G1 Mgt & Admin\03.Education Adviser -Safeguarding files\Admin Assisstant\A parents and carers guide to violence and abuse in teenage relationships.pdf</p> <p>Crush CRUSH is an awareness raising and support programme to help young people make safe and healthy relationships. The sessions are run in small groups and are specifically designed for 13-19 year olds. http://www.westmerciawomensaid.org/crush/</p>
Fabricated and induced illness (FII)	<p>Fabricated or induced illness (FII) is a rare form of child abuse. It occurs when a parent or carer , exaggerates or deliberately causes symptoms of illness in the child.</p> <p>https://www.nhs.uk/conditions/Fabricated-or-induced-illness/</p>



Faith abuse	<p>Faith and belief-based child abuse, including practices around 'spirit possession' and 'witchcraft', is a hidden crime, which makes it difficult to quantify in terms of magnitude. However, from our own experience and in consultation with communities, we know this kind of abuse is under-reported.</p> <p>www.gov.uk/government/publications/national-actionplan-to-tackle-child-abuse-linked-to-faith-or-belief</p> <p>Further contacts for advice can be found from the local representatives for some faiths.</p> <ul style="list-style-type: none">• An Exploration of Knowledge About Child Abuse Linked to Faith or Belief (2016)• National Action Plan to Tackle Child Abuse Linked to Faith or Belief (2012)• Safeguarding Children from Abuse Linked to a Belief in Spirit Possession (2007) this good practice guidance is archived but still available.• Eleanor Stobart report 2006: Child Abuse Linked To Accusations of Possession And Witchcraft (2006)• Unicef study report: Children Accused of Witchcraft• AFRUCA: Africans Unite Against Child Abuse
Honour based violence (HBV)	<p>Honour' based violence (HBV) occurs when perpetrators believe a relative or other individual has shamed or damaged a family's or community's 'honour' or reputation (known in some communities as izzat), and that the only way</p>



	<p>to redeem the damaged 'honour' is to punish and/or kill the individual. 'Honour' based violence is a term that is widely used to describe this sort of abuse however it is often referred to as so called 'honour' based violence because the concept of 'honour' is used by perpetrators to make excuses for their abuse. There is a very strong link between 'honour' based violence, forced marriage and domestic abuse. The term 'Honour Based Violence' is the internationally recognised term describing cultural justifications for violence and abuse. Honour Based Violence cuts across all cultures and communities: Turkish, Kurdish, Afghani, South Asian, African, Middle Eastern, South and Eastern European for example. This is not an exhaustive list. Where a culture is heavily male dominated, HBV may exist. The police have made it a high priority to help communities fight back to tackle both honour based violence and hate crime.</p> <p>The 'Honour Network Help line': 0800 5 999 247</p>
<p>Female genital mutilation (FGM)</p>	<p>Female Genital Mutilation (FGM) comprises all procedures involving partial or total removal or the external female genitalia. FGM is illegal in the UK and as of October 2015 mandatory reporting commenced. If education staff or other professionals discovers that an act FGM appears to have been carried out on a girl under 18 years old there is a statutory (legal) duty on teachers for them PERSONALLY to report it to the police.</p> <p>Read http://www.nhs.uk/Conditions/female-genitalmutilation for NHS information and signs of FGM. Any suspicion of FGM should be referred to the Police and social care.</p> <ul style="list-style-type: none"> - Annalise Price-Thomas (Head of Service) has completed the online home office training, '<i>Female Genital Mutilation: Recognising and Preventing FGM</i> - E-learning package- http://www.fgmelearning.co.uk/ for interested staff or professionals (free home office elearning)
<p>Forced marriage</p>	<p>UK Forced Marriage Unit fmu@fco.gov.uk Telephone: 020 7008 0151 Call 999 (police) in an emergency. www.gov.uk/stop-forced-marriage for information on Forced Marriage. Visit Home Office website to</p>



	<p>undertake Forced Marriage e-learning package https://www.gov.uk/forced-marriage. GSCB one day Awareness training delivered by Infobuzz www.gscb.org.uk Please see 'Multi-Agency Practice Guidelines- Handling cases of Forced Marriage' for more information and detail: https://www.gov.uk/forcedmarriage.</p> <p>Prevention Freedom Charity- Aneeta Prem 'But it's not fair' book. A book for teenagers looking at forced marriage from the point of view of school friends of the girl who went to India and didn't come back. This book promotes discussion. www.freedomcharity.org.uk The Freedom Charity (UK charity) have a helpline, text facility and app which can be downloaded to help to provide support and protection for victims of abuse, FGM or forced marriage. They can be contacted on tel: 0845 607 0133 or text 4freedom to 88802 or go to the website to download the app from the app page.</p>
Gangs and youth violence	<p>Here is a PDF assisting with Gangs and Youth https://assets.publishing.service.gov.uk/government/uploads/system/uploads/attachment_data/file/418131/Preventing_youth_violence_and_gang_involvement_v3_March2015.pdf</p> <p>This is a website for the Youth Violence Prevention Initiative: http://www.worcesterma.gov/youth-opportunities/youth-violence-prevention</p>
Gender-based violence/violence against women and girls	<p>https://www.gov.uk/government/publications/violence-against-women-and-girls-evidence-digest-january-2018</p> <p>For information about West Mercia Rape and Sexual Abuse visit: https://www.wmrsasc.org.uk/</p> <p>FGM (Female Genital Mutilation) is violence against women and girls. Forced marriage and so called 'Honour' based violence are a violation against human rights and is a high priority area of the national and local Violence Against Women and Girls Agenda. It is, primarily an issue for young women and girls aged between 13 and 30 years.</p> <p>Hope House SARC (Sexual Assault Referral Centre): 01452 754390</p>



	<p>www.onyourmindglos.nhs.uk for 'I've been raped or sexually assaulted' information.</p>
Gender Identity Issues	<p>The Gender Trust is a listening ear, a caring support and an information centre for anyone with any question concerning their gender identity, or whose loved one is struggling with gender identity issues. People who might be Transgender, Transsexual or people who do not identify with the gender they were assigned at birth or those who are simply unsure. Address: 76 The Ridgeway, Astwood Bank, B96 6LX tel: 0845 231 0505 www.gendertrust.org.uk</p>
Private fostering	<p>National Fostering Agency (NFA) Call on: 0808 284 9226</p> <p>Kinship Care Kinship care means that relatives or friends look after children who cannot live with their parents. Visit this website for more information: http://www.worcestershire.gov.uk/privatefostering</p>
Preventing Radicalisation and Extremism/HATE (PREVENT duty)	<p>www.educateagainsthate.com is the government website providing information and practical advice for parents, teachers and schools leaders on protecting children from radicalisation and extremism. Anti-Terrorist Hotline: tel 0800 789 321 also be raised by email to the Home office: counter.extremism@education.gsi.gov.uk. Let's talk about it is an excellent website for parents: www.ltai.info/ as is www.preventtragedies.co.uk</p> <p>While it remains very rare for school age children to become involved in extremist activity to the point of committing criminal acts, young people can be exposed to extremist influences or prejudiced views, including via the internet, from an early age. As with other forms of criminality or risk of harm, early intervention is always preferable. Schools, working with other local partners, families and communities, can help support pupils who may be vulnerable as part of wider safeguarding responsibilities. Channel guidance: https://assets.publishing.service.gov.uk/governme</p>



	<p>nt/uploads/system/uploads/attachment_data/file/425189/Channel Duty Guidance April 2015.pdf</p>
<p>Sexting/Sextortion/youth produced imagery</p>	<p>http://www.nspcc.org.uk/preventing-abuse/keepingchildren-safe/sexting (NSPCC website).</p> <p>https://www.westmercia.police.uk/article/8206/Sexting (West Mercia Police website)</p>
<p>Children Missing in Education (CME)</p>	<p>Children Missing Education (CME) refers to 'any child of compulsory school age who is not registered at any formally approved education activity eg school, alternative provision, elective home education, and has been out of education provision for at least 4 weeks'. CME also includes those children who are missing (family whereabouts unknown), and are usually children who are registered on a school roll / alternative provision. This might be a child who is not at their last known address and either has not taken up an allocated school place as expected, or has 10 or more days of continuous absence from school without explanation, or left school suddenly and the destination is unknown.</p> <p>This is the link for Children Missing Education on the Worcestershire website http://www.worcestershire.gov.uk/info/20595/behaviour_and_attendance/293/children_missing_education</p> <p>Babcock Prime – Educational Welfare Team: Primeedinservice@babcockinternational.com 01905 678138</p>
<p>Missing Children and Adults Strategy (vulnerable children and adults who go missing)</p>	<p>Every year an estimated 200,000 people go missing in the UK. In some cases, missing adults may have made a choice to leave and 'start their lives over again', but the vast majority of missing people, children and adults, are vulnerable and need protection and support. The strategy has three key objectives which provide the right foundations for any effective local strategy to</p>



	<p>tackle this issue: Prevention - reducing the number of people who go missing, including through prevention strategies, education work and early intervention in cases where children and adults repeatedly go missing Protection - reducing the harm to those who go missing, including through a tailored, risk-based response and ensuring agencies work together to find and close cases as quickly as possible at a local and national level Provision - providing support and advice to missing persons and families by referring them to agencies promptly and ensuring they understand how and where to access help. The police should be informed if any child or adult goes missing. The Missing Children and Adults strategy can then be referred to for further information and help. It is a home office publication (2011).</p> <p>https://www.gov.uk/government/publications/missing-children-and-adults-strategy</p> <p>https://assets.publishing.service.gov.uk/government/uploads/system/uploads/attachment_data/file/117793/missing-persons-strategy.pdf</p>
Children with family members in prison	<p>Approximately 200,000 children have a parent sent to prison each year. These children are at risk of poor outcomes including poverty, stigma, isolation and poor mental health. NICCO (www.nicco.org.uk) provides information to support professionals working with offenders and their children to help mitigate the negative consequences for these children.</p> <p>https://www.solgrid.org.uk/education/safeguarding/child-protection/issues/children-family-prison/</p>
Children and the court system	<p>Children are sometimes required to give evidence in courts, either for crimes committed against them or for crimes they have witnessed. There are two guides to support these children which can be found at www.gov.uk (young witness booklet for 5 to 11 year olds) which is a pdf. There is also a document called “going to court and being a witness age 12 to 17” which is also found at www.gov.uk. Making family arrangements via</p>



	<p>court can be stressful and entrench conflict in families. The ministry of Justice has just launched an online dispute resolution service. This can be useful to parents and carers. Got to www.gov.uk and search for “get help with arrangements.”</p>				
<p>Stalking</p>	<p>General Advice:</p> <ul style="list-style-type: none"> ▪ If it doesn't feel right it probably isn't! ▪ Seek support from trusted family/friends ▪ Report to the police and do this early ▪ Keep a diary in a secure location ▪ Screenshot emails etc and save them ▪ Photograph/video your stalker if safely possible. ▪ Get advice: Hollie Gazzard Trust, Paladin etc... ▪ Tighten security; home, work and on-line <p>National Stalking Helpline For advice and support. The helpline will operate a triage service for local support and make referrals -Phone: 0808 802 0300 Website: www.stalkinghelpline.org Email: advice@stalkinghelpline.org</p> <p>Paladin: National Stalking Advocacy Service For advice and referral. Phone line: 020 3866 4107 Email: info@paladinservice.co.uk Website: www.paladinservice.co.uk/</p> <p>Hollie Gazzard Trust https://holliegazzard.org/</p>				
<p>Sexual violence and sexual harassment between children in schools and colleges</p>	<p>Here is advice from the WCC webpage: http://www.worcestershire.gov.uk/info/20379/domestic_abuse_and_sexual_violence/886/sexual_violence_and_abuse</p> <p>West Mercia Rape and Sexual Abuse Support Centre: https://www.wmrsasc.org.uk/ 01905 724 514 <u>Helpline opening times:</u></p> <table border="1" data-bbox="683 1794 1398 1968"> <tr> <td>Monday</td> <td>7.30pm to 9.30pm</td> </tr> <tr> <td>Tuesday</td> <td>1.00pm to 5.00pm</td> </tr> </table>	Monday	7.30pm to 9.30pm	Tuesday	1.00pm to 5.00pm
Monday	7.30pm to 9.30pm				
Tuesday	1.00pm to 5.00pm				



	Thursday	7.30pm to 9.30pm
	Friday	10.00am to 2.00pm